



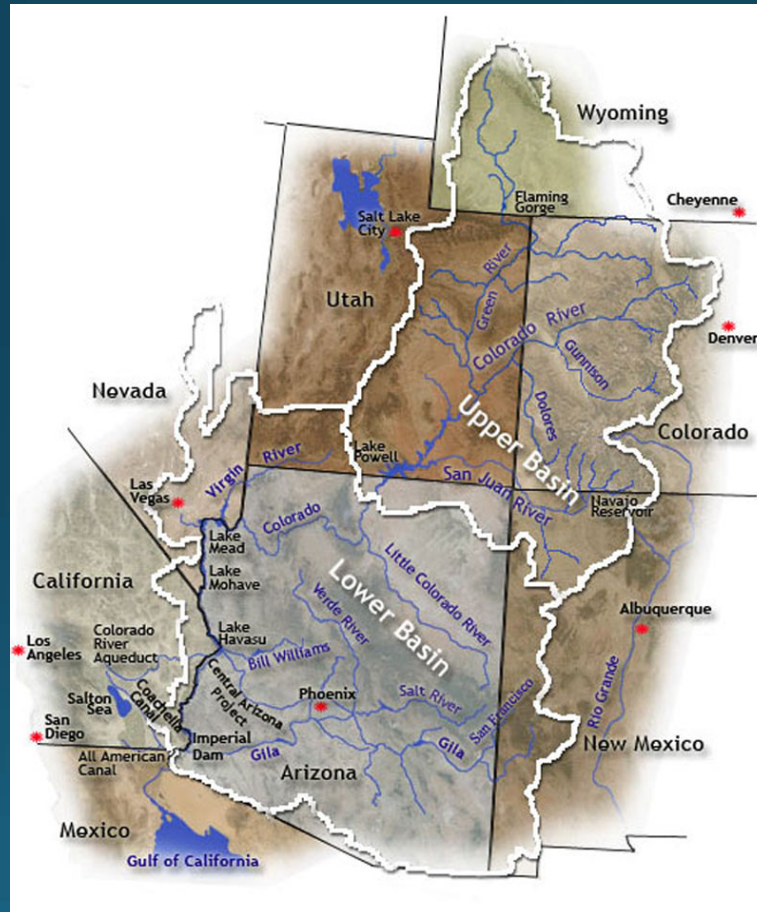
Leigh Ing, **Executive Director**

Presented at:
TLLRWDCC Workshop
November 2017

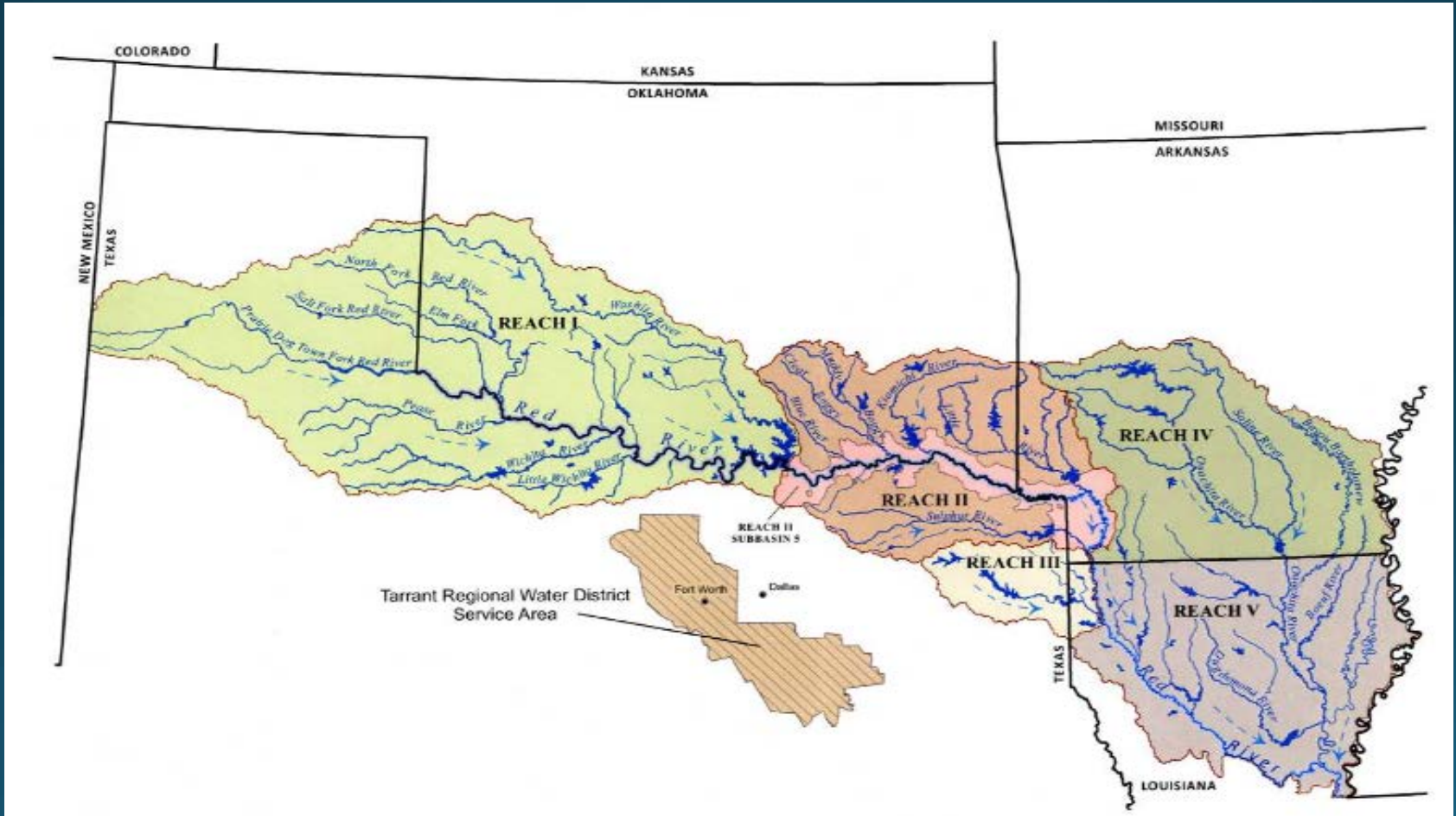
WORKSHOP INTRODUCTION & BRIEF OVERVIEW

- What is a Compact?
- What is a Low-Level Waste Compact?
- Why we are doing a workshop?
- Who you will be hearing from today?

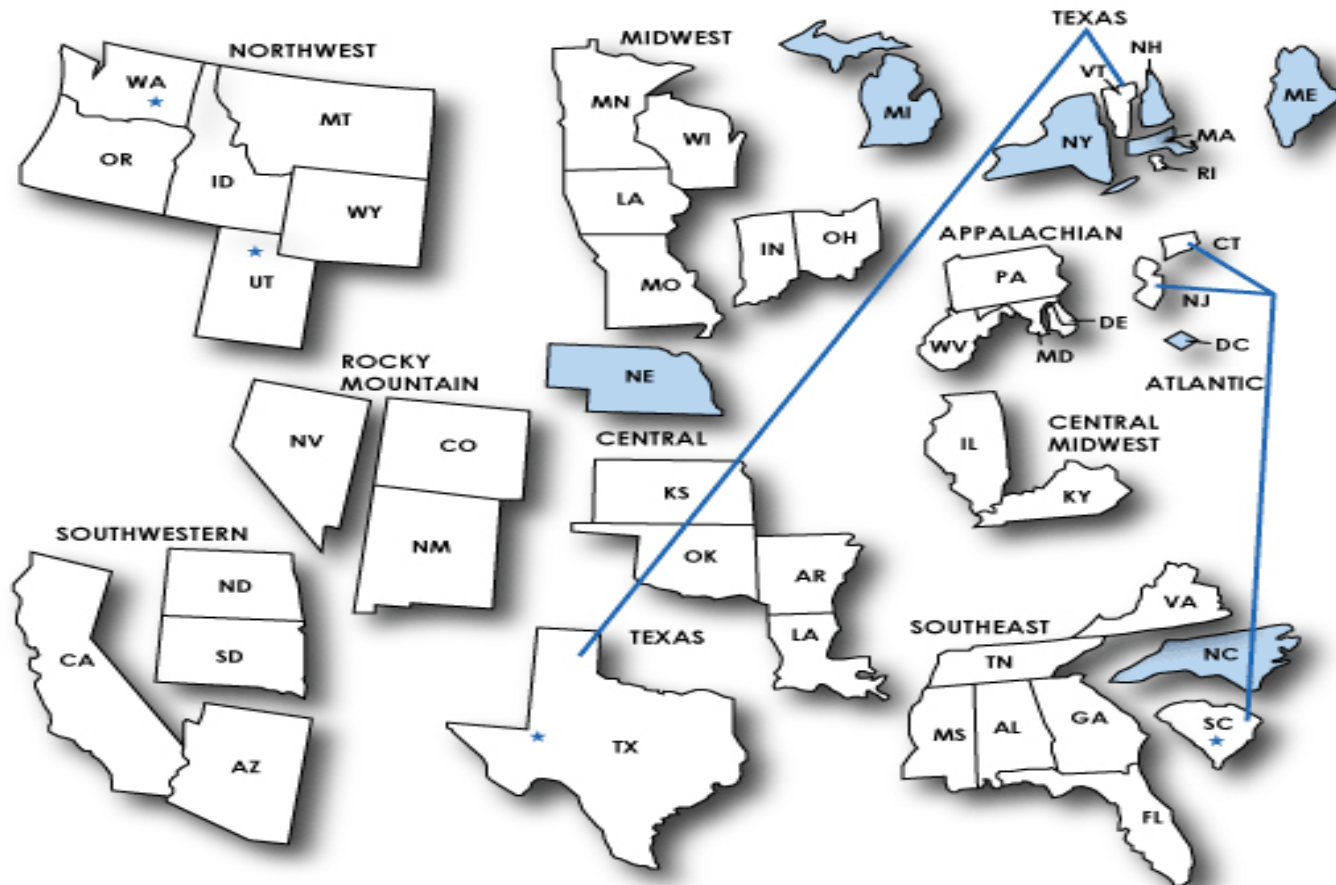
A very famous Compact – The Colorado River Compact of 1922



Red River Compact



Low-Level Radioactive Waste Federal Compacts



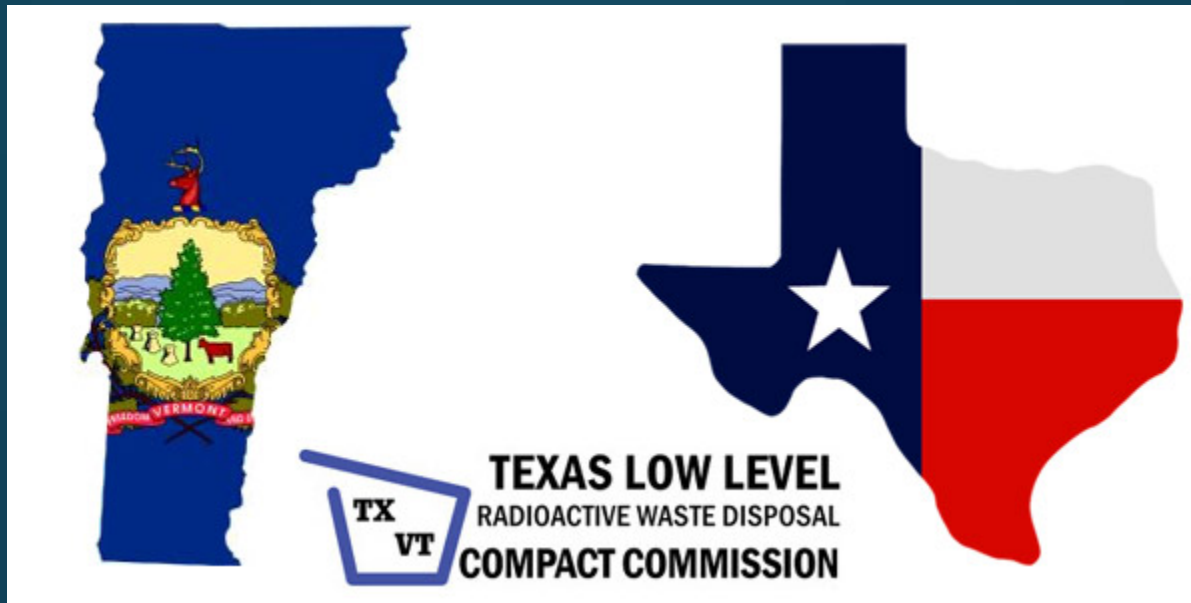
★	Active Disposal Site (4)	<p>Note: Data as of May 2014</p> <p>Alaska and Hawaii belong to Northwest Compact.</p> <p>Puerto Rico is unaffiliated.</p>
□	Approved Compact (10)	
■	Unaffiliated (10)	

Texas Low-Level Radioactive Waste Disposal Compact Commission

- Our Compact protects the capacity of the Compact Facility for Texas and Vermont generators.
- The Compact Commissioner authorizes generators for Texas and Vermont to export out of the compact.
- The Compact Commission “makes available to the Texas and Vermont and the public information concerning low-level radioactive waste management needs, technologies and problems.” (See Public Law 105-236, Sec. 3.04(9)– September 20, 1998)

Waste Management Need – Source Disposal

- Why is Source Disposal So Important? (NNSA)
- Superfund! No One is Immune. (TCEQ)
- Source Storage and the 2-Year Rule. (TDSHS)
- How Can I Dispose of My Source? The SCATR Program. (CRCPD)
- How does a Compact Affect Me? (TLLRWDCC)
- Does Texas Have a Compact Facility? And Why Do I Care? (WCS)
- The Role of the TCEQ. (TCEQ)



Thank you for being here!

Leigh Ing, Executive Director : 512-217-8045

Andrew Tachovsky, Deputy Executive Director: 512-791-7576

leigh.ing@tllrwdcc.org or andrew.tachovsky@tllrwdcc.org